

AUTOMATE A FLEET OF CARTS WITH JUST ONE BST AGV DRIVE UNIT.



The Creform CA-A50060-NSB BST AGV Tugger

A Creform BST AGV works as an automated tugger, traveling along a magnetic tape guidepath, slipping under a stationary cart, extending a tow pin into the cart's frame and then conveying it to a designated workstation or unload point. After disengaging from the cart, it travels to its next assignment. One BST AGV has the ability to mobilize multiple carts or a series of BSTs for an entire fleet.

The Creform NSB model featured here has several new attributes over the Standard, Low Profile and TiteSpace models, and it is manufactured in our South Carolina facility. It has added safety features, extra size to accommodate larger batteries, operational and physical improvements and an optical communications device. Its safety features include a non-contact laser bumper obstacle sensor with e-stop and an electromechanical brake, all which qualify for a category 2-safety standard. It also has an 8-bit optical communication device, which can be used for remote starting. The raise-lower function of the drive wheel has been improved for operational convenience.



Creform line-side gravity flow racks are easily sized to specific needs.



Creform carts can be built to safely handle sequenced large parts.



A single BST AGV can manage an entire fleet of sequenced parts carts.

- Run-Ready with prompt shipment from stock. Made in USA.
- Safety — audible warning and flashing light, obstacle sensor, non-contact laser bumper and e-stop. Safety category 2 standard.
- 24 Volt Power — full shift run under capacity load typical. Quick exchange battery tray & quick connector standard. Auto charge optional.
- Easy access engage/disengage lever.
- Follows magnetic tape guidepath.
- Embedded magnetic strips available for high-traffic areas.
- Command tapes initiate AGV functions such as speed and obstacle sensor view changes, route selection and extend/retract tow pin.
- Standard 8 bit optical communication device. Often use for remote starting.
- For options such as a PLC, RF and RFID, please consider Creform AGV model CA-A50060-NSI.
- Service & Support: Programming, cart/structure designs, kitting or assembly assistance along with route layout installation available from Creform.

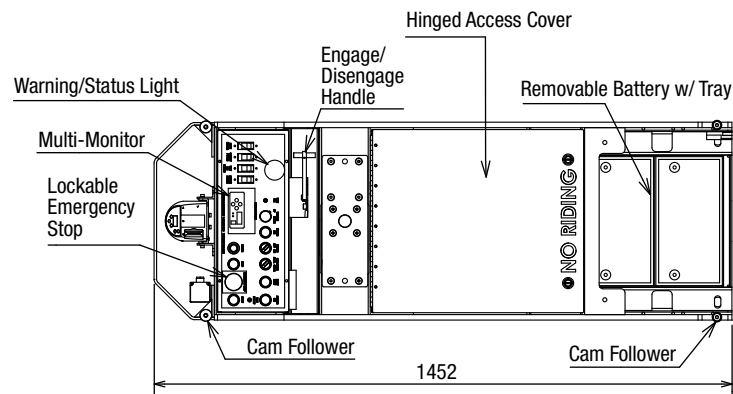
CREFORM CA-A50060-NSB BST AGV TUGGER SPECIFICATIONS

Part number	CA-A50060-NSB
Guidepath	50mm wide Creform magnetic tape and/or 6mm wide embedded magnetic strip
Direction/speeds	Forward only; 3-50m/min (10 to 164 ft/min)
Braking system	Regenerative electromechanical emergency & parking brake
Minimum turning radius	800mm R (31.5" R) - 180° turn
Power supply	24V DC (two 12V batteries) - 110 AH for typical 10 hrs of run time
Control method	Magnetic command tapes
Floor condition	Surface roughness 10mm or less between min. & max. height slope 1% or less; step 2mm or less; trough 10mm or less
Usage conditions	Indoor only; 0-40°C, 32-104°F; 30 to 80% humidity - no dew formation
Safety devices	Audible warning and flashing light, obstacle sensor, non-contact laser bumper and e-stop
Protective circuits	Over current prevention on motor (protect with motor driver) Over current protection on power source (15A breaker)
Draw bar/load capacity	26kg (57lb)/600kg (1320lb)* - includes cart plus AGV
Tow pin	30mm shaft OD/approximately 50mm vertical stroke
Unit weight/with batteries	138kg (304lb)/212kg (468lb)

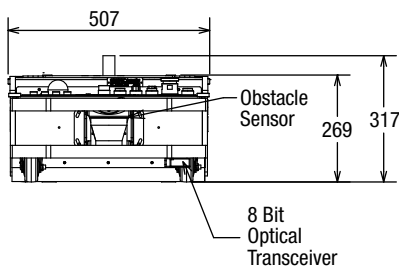
*Capacity depends on floor conditions and caster selection on the cart.



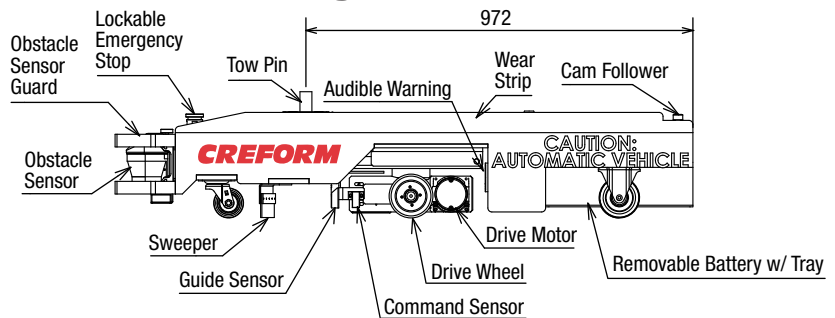
TOP VIEW



FRONT VIEW



SIDE VIEW



South Carolina Office
Ph 864-989-1700 • Fax 864-877-3863
SCsales@creform.com

CREFORM[®]
MATERIAL HANDLING SYSTEM
HOW IT'S PUT TOGETHER... SETS US APART.

Michigan Office
Ph 248-926-2555 • Fax 248-926-2565
MIsales@creform.com

www.creform.com
800-839-8823